

## ZL-2302 *Zwei L* Stainless Steel Knob Base

### Features

- Superior "Zwei L Finish" - *Zwei L* represents the very pinnacle of ultra-premium Japanese hardware design. The contrasting bands of mirror finish and lustrous satin on a faceted profile give a jewel like finish that highlights and enhances any industrial design
- Glass thickness: 4 ~ 6 mm



### Plate + Screw Set for ZL-1904 and ZL-1905 Knobs (Φ16)

Part No.
GZL-2302-1916

No.	Part Name	Material	Finish/Colour
①	Base Plate $\phi$ 16	Stainless Steel (SUS316)	Zwei L Finish
③	Gasket $\phi$ 14	Elastomer (TPE)	Plain
⑤	Screw M4 $\times$ 16	Stainless Steel	Partially Zwei L Finish

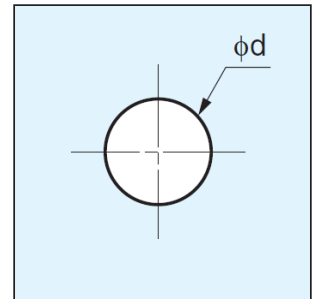
### Plate + Screw Set for ZL-1901 and ZL-1903 Knobs (Φ25)

Part No.
GZL-2302-1925

No.	Part Name	Material	Finish/Colour
②	Base Plate $\phi$ 25	Stainless Steel (SUS316)	Zwei L Finish
③	Gasket $\phi$ 14	Elastomer (TPE)	Plain
④	Gasket $\phi$ 20	Elastomer (TPE)	Plain
⑤	Screw M4 $\times$ 16	Stainless Steel	Partially Zwei L Finish

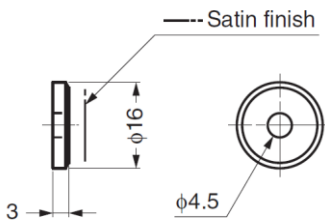
※2 sets are necessary in use for ZL-1903

### Cut Out Dimensions

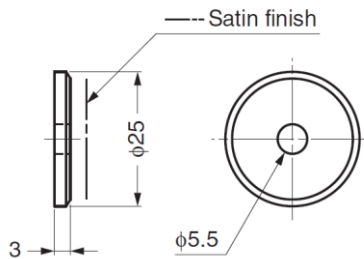


Glass thickness 4, 5:  $d=5$   
Glass thickness 6:  $d=6$

① Base plate  $\phi$  16

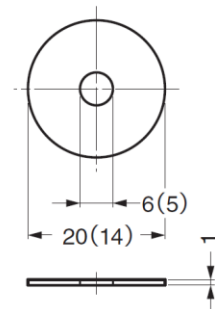


② Base plate  $\phi$  25



③ Gasket  $\phi$  14

④ Gasket  $\phi$  20



⑤ Screw M4  $\times$  16

